
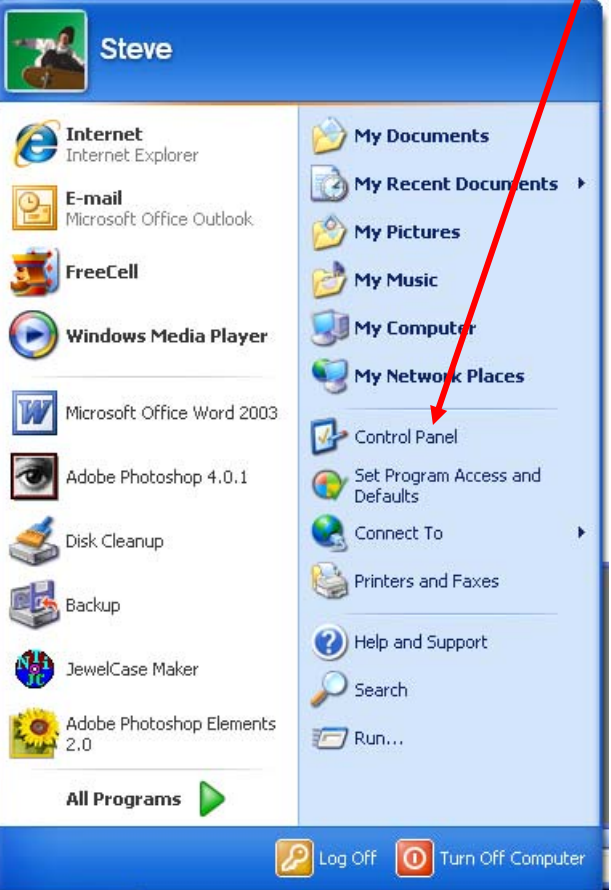
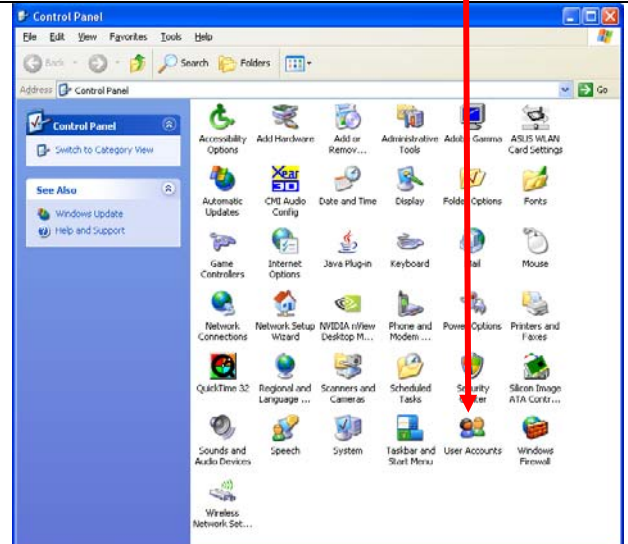
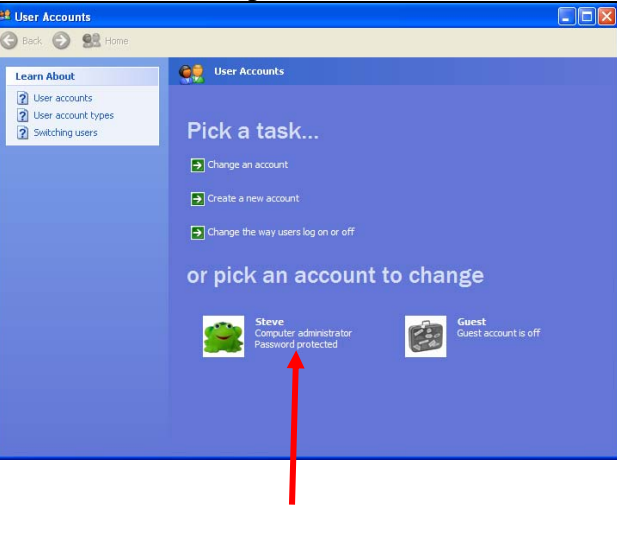
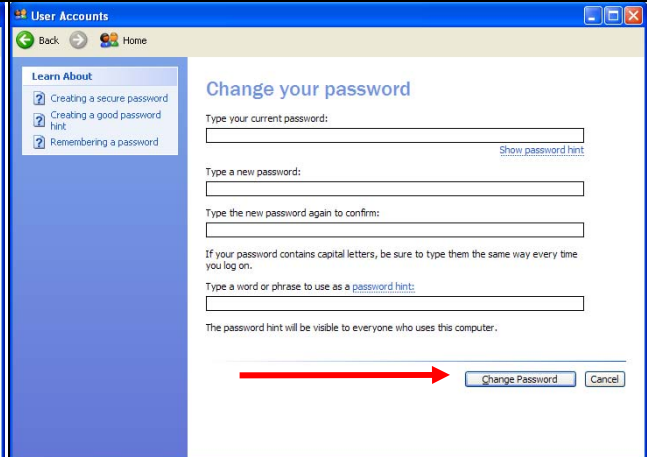
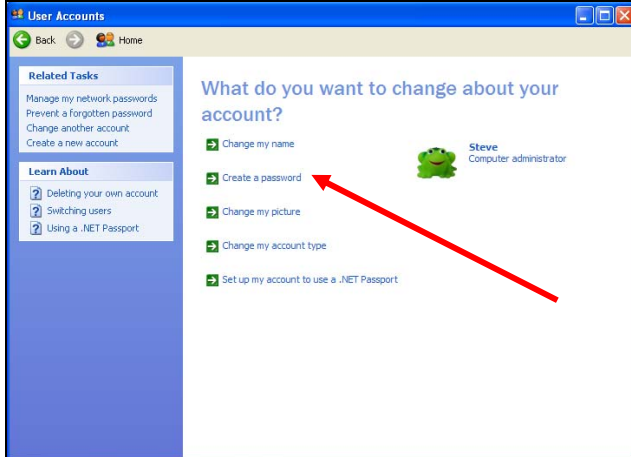


## How to Install & Change Administrator's Password

<p>Click on "Start"</p> 	<p>Click on "Control Panel"</p> 
<p>Click on "User Accounts"</p> 	<p>Click on the "Computer administrator" icon</p> 

If you don't have a password, this screen will appear offering you "Create a password." If you already have a password, it will offer you "Change my password." Click on it.

Follow the instructions in this screen. Then, click on "Change Password"



On this screen, click on "No"

This is the final screen showing that the administrator has a password

