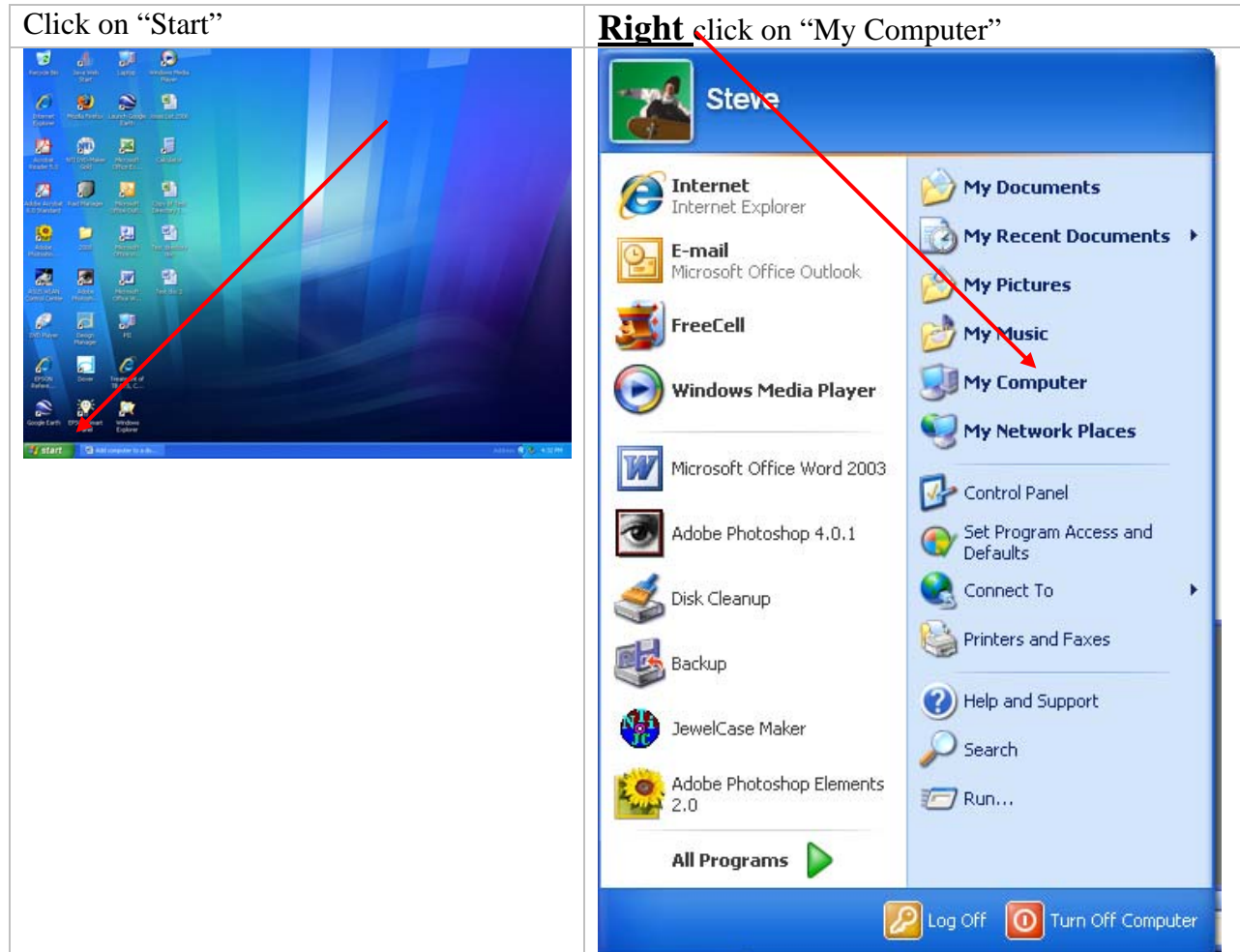
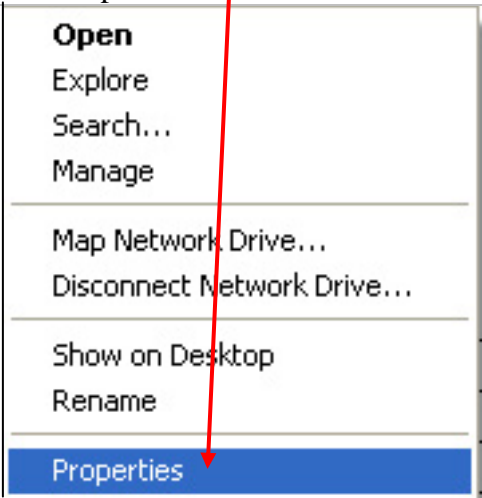
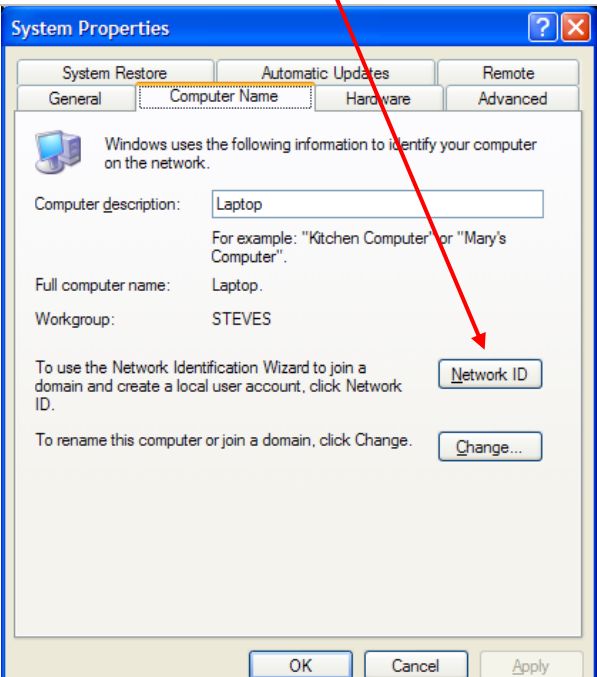

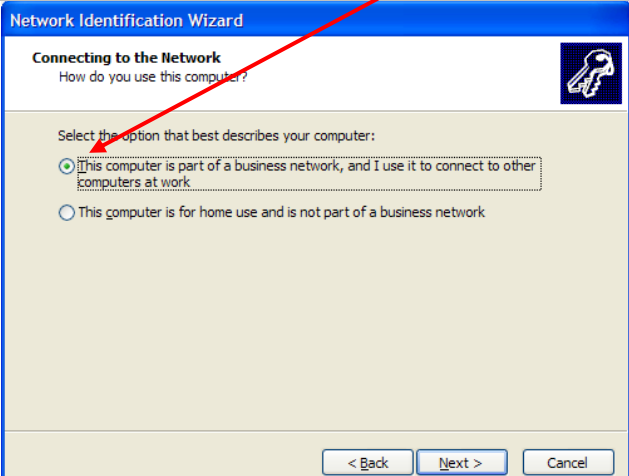


How to add a computer to a Server-based Domain

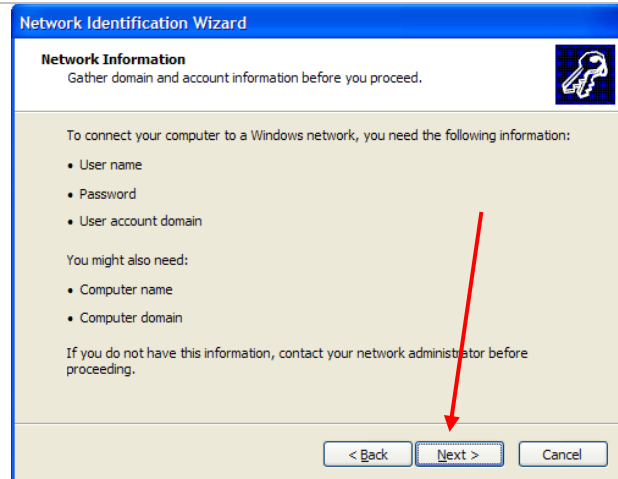
The following instructions show a Network Administrator how to add a new user/computer to a Server-based Domain. These instructions do not apply to Peer-to-Peer (home) networks.

The person using these instructions must have Network Administrator rights and password.



<p>Click on "Properties"</p> 	<p>Click on "Network ID"</p> 
<p>Click on "Next"</p> 	<p>Select "This computer is part of a business network,...."</p> 

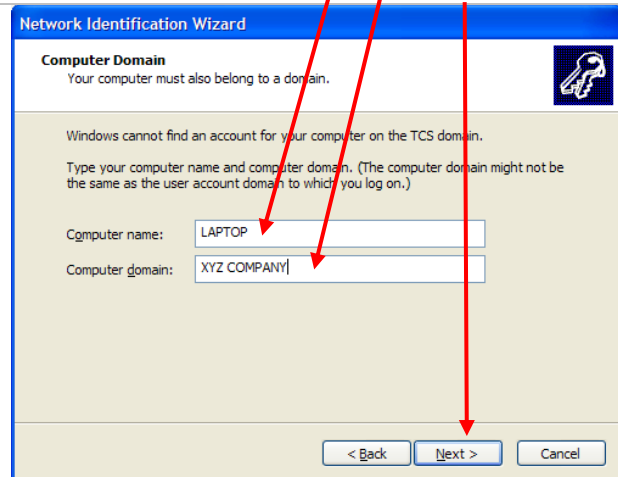
This screen reminds the Administrator to gather specified information before proceeding. Click on "Next."



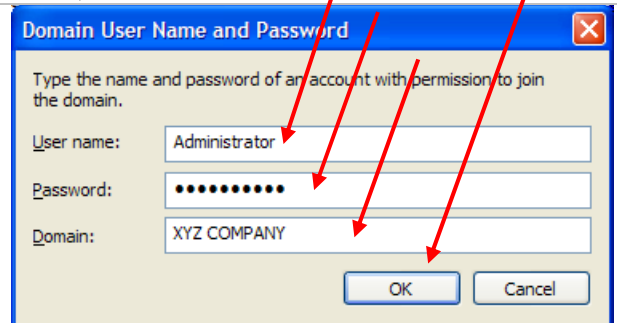
For purposes of this example, We're installing "Fred Smith" as a new user on the "XYZ Company" domain. The "Password" is the Administrator's password. Click on "Next"



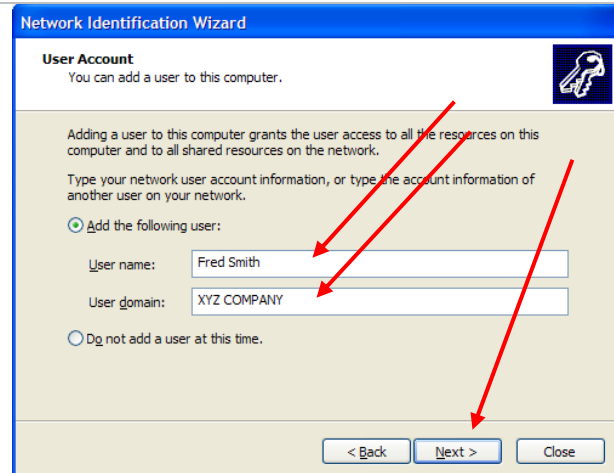
If you want the computer to have a name other than "Fred Smith," here's where it goes. In a small business, the "Computer domain" is the same as "Company domain name." Then, click on "Next."



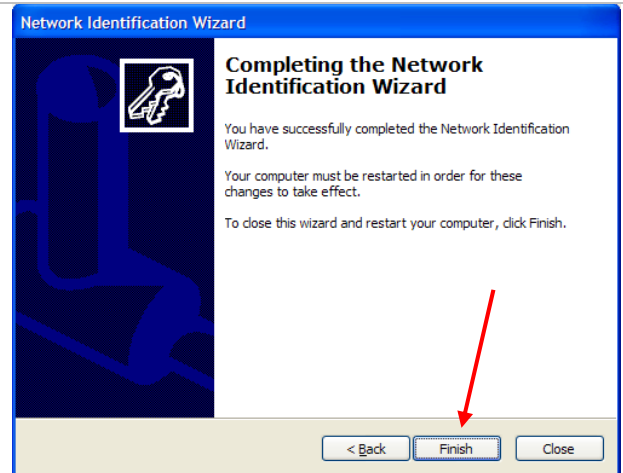
Here, the "User name" is the "Administrator's" (Some Administrators simply use the name "Administrator;" others use their names.) Enter your Administrator password and Domain. Then, click "OK."



This adds "Fred Smith" as a user at the XYZ Company domain. Click on "Next"



This completes the installation of "Fred Smith" as a computer user at the "XYZ Company." Click on "Finish."



Restart the computer.

